



**MIDWEST**  
bus sales | Division of The Kincaid Group

# COUNT ON MIDWEST BUS SALES FOR OUTSTANDING SERVICE

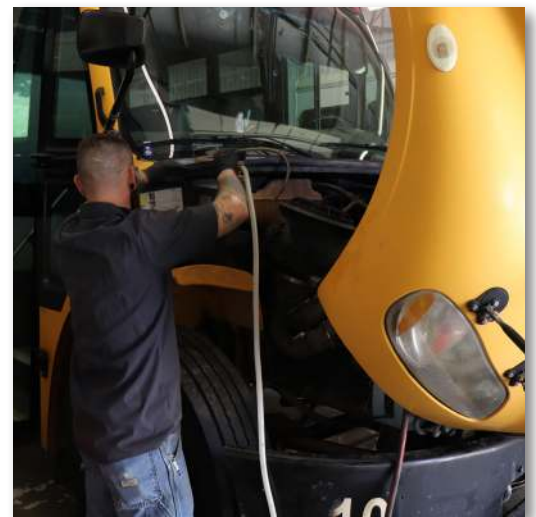


Midwest Bus Sales' Service Departments are staffed with skilled, factory-trained technicians who hold numerous certifications from various OEM manufacturers. We are authorized factory warranty dealers for a variety of industry-leading OEMs:



In addition, we can customize any preventive maintenance programs and inspection processes to meet your specific needs, maximizing vehicle life, ensuring safety, and reducing costly downtime. We specialize in component diagnostics, including electronics, emissions, and computer programming.

- ▶ Air and Hydraulic Brake Inspection and Repair\*
- ▶ CNG Compressed Natural Gas Vehicle Certified\*
- ▶ Collision and Paint Repair\*
- ▶ A/C Installation Service Repairs and Inspections
- ▶ Child Restraint Seat Installation
- ▶ Complete Body and Chassis Service
- ▶ Custom Audio Video Installation
- ▶ Digital Camera Installation and Service
- ▶ Engine and Transmission Diagnostics and Repair
- ▶ GPS Installation
- ▶ Graphic Design and Installation Services
- ▶ Lube/Oil/Filter Changes
- ▶ Preventive Maintenance Inspections
- ▶ State and DOT Inspections
- ▶ Wheelchair Lift Inspections and Repairs



\*services available at select locations.



# MIDWEST

bus sales | Division of The Kincaid Group

## WE'RE HERE TO HELP WITH YOUR LAST-MINUTE SCHOOL BUS NEEDS

CERTIFIED PRE-OWNED • NEW • USED • LEASE



### Hundreds of new and used buses in stock and ready for immediate delivery

For current inventory, check out [www.midwestbussales.com](http://www.midwestbussales.com), or contact one of our nearest locations.

### INQUIRE NOW TO LET US HELP YOU WITH YOUR NEEDS!

#### MISSOURI & KANSAS

800-447-2801

#### ARKANSAS

800-776-2429

#### COLORADO

844-55PARTS  
844-557-2787

#### OKLAHOMA

El Reno: 800-762-8916  
Tulsa: 918-447-3722

#### ILLINOIS

Princeton: 815-875-4510  
Litchfield: 877-324-0136

[www.midwestbussales.com](http://www.midwestbussales.com)